

in this issue >>>

A message of appreciation

Week 5 – Options and Visions

Location.... Location... Location...

One site? Two Site? Two and a half site?

Next steps?



A weekly summation of the *Gathering Place* workshops

The Gathering Gazette

current topics >>>

A message of appreciation

Da Daghay Development Corporation thanks everyone participating, for their time, and creativity.

This week, conversations attempted to identify further the benefits and challenges of the remaining sites still being considered. As discussions around the vision and hopes continued, participants were once again asked to envision one site, two sites, or some other combination.

The following pages capture this creativity, and we look forward to incorporating them all into the vision.

To get in touch anytime, contact:

Ben Asquith, CEO 867.332.7898

Week 5 – Options and Visions

“With the right people, culture, and values, you can accomplish great things.”

– Tricia Griffith

Our week 5 event was held April 3, with about 40 people in attendance. These weekly meetings are a huge commitment and we so appreciate everyone giving up an evening to spend with us each week. This week, we discussed the other settlement land parcels voted on in previous weeks.

A particularly delicious dinner was served on time at 5:00pm, following a welcome Da Daghay Development Corporation, Ben Asquith, and a prayer by Elder Jim Miller.

The conversations are ever-evolving, and it remains challenging to attempt to capture everyone’s diverse visions for a Gathering Space and Administration Building. Participants remain divided in the vision, services, and location.

Scrutinizing the settlement lands initially voted on in the early weeks, has highlighted the development challenges of the available lands.

Further, it was obvious that the same committed group of people attend each week, and comments from participants highlighted the lack of input from key citizens, particularly those living at Lake Laberge. These comments were well-received by the DDDC team, who are preparing to head to

Lake Laberge to involve those living on the land, and many unable to venture into town for evening meetings. The importance of having all points of view included in this process, cannot be

understated. The building or buildings, for both a Gathering Place and an Administration building, needs to meet the needs of all citizens, and all government services. This is a tall order, and we greatly appreciate everyone’s continued input and commitment to this venture.

To accommodate a visit or two to Lake Laberge, we are **canceled April 10 and 17 sessions. See you April 24, at the Gold Rush!**



What about here >>>

Location Location.... Location....

The first property discussed this evening, was the second most popular site, based on votes from previous weeks. Settlement land C-28B, on Robert Service Way. This property is by far the largest available parcel within City limits, and while quite accessible and conducive to development, had some site challenges as well.



Benefits

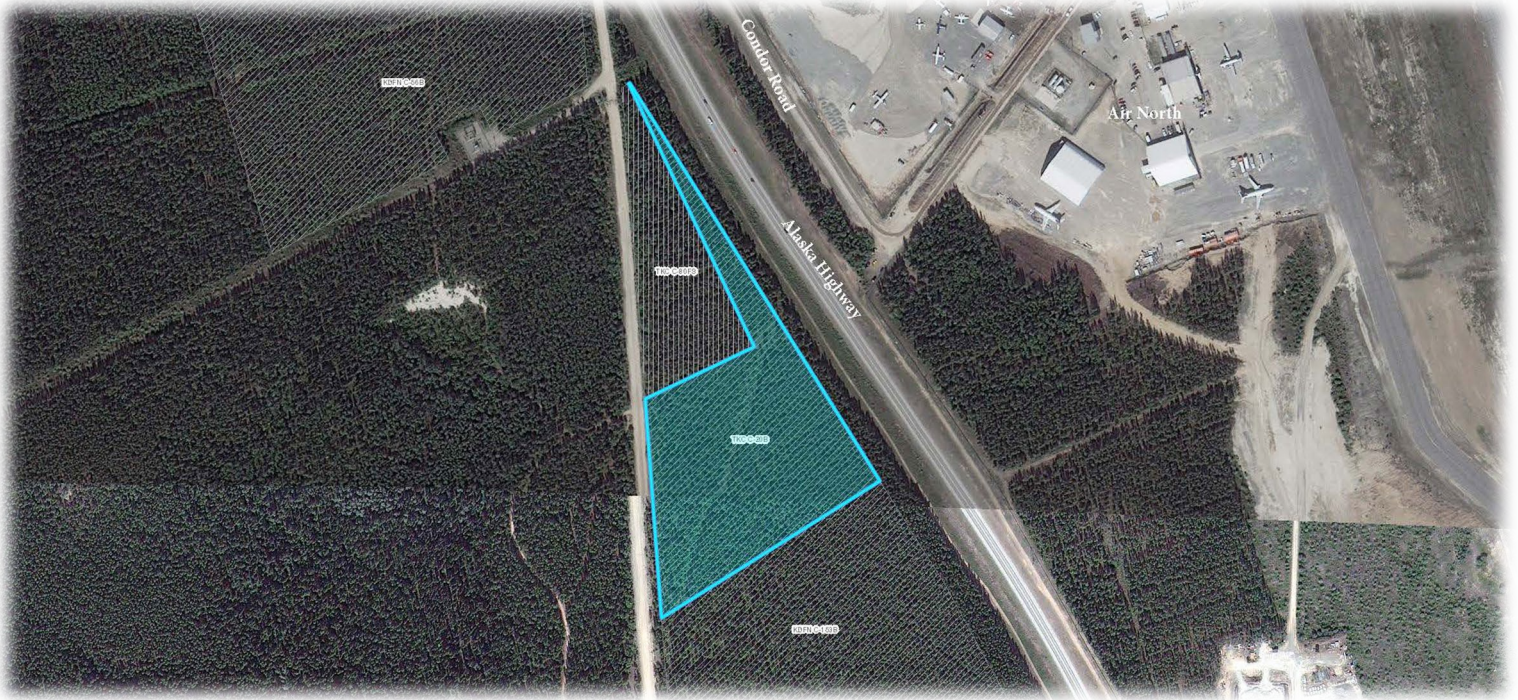
- Space to accommodate everything
- Close to town
- Lots of land
- Can create a community
- Good place for traffic lights
- Landscaping allows for wilderness experience
- Space for overnight parking, and convenience store
- Plenty of meeting room
- Infrastructure in place to share space
- Lots of space for parking, outdoor structures, and workshops
- Good proximity to Schwatka Lake and trails
- No highway pollution

- Safety risk if dam breaks
- Incompatible adjacent land use (mud bog, snow dump, LNG, airport)
- Noise - proximity to airport
- Health impacts of being so close to the LNG
- Too close to the watershed
- Too close to South Access -- too busy
- Down-gradient from gravel quarry
- Soils are very mucky
- Contaminated site from the snow dump
- No bus stops

Challenges

Location... Location... Location

Based on the voting over the few weeks, the third most popular site was Settlement land C-80CF and C-20B, on the Alaska Highway. These two parcels combined, provides approximately 4.9 ha (12 acres) for development. Adjacent to the Alaska Highway, there are both benefits and challenges presented by this parcel.



Benefits

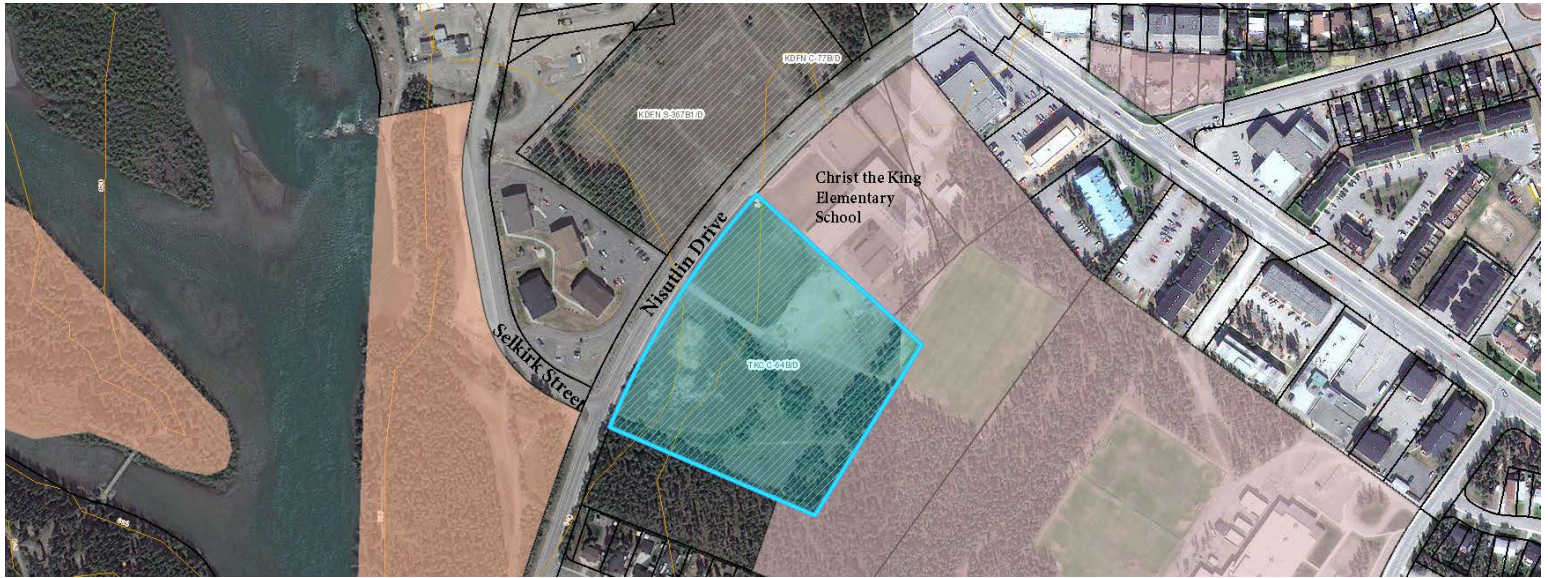
- Fairly accessible
- Scenic view
- Space and location to have a gas station / convenient store
- Away from dam if it breaks
- Fiber optic nearby
- Park my car and jump on a plane!
- Walking trails around airport and easy access to downtown
- First exposure for tourists
- Ample parking potential
- Close to C-30B
- Close to airport and museums

- Too close to airport
- Far out of the way
- Too close to busy highway
- Not large enough for expansion
- All infrastructure needs to be installed (water, sewer, etc.)
- Swampy
- Too small parcel
- No bus route
- Highway is very busy
- Off the grid

Challenges

Location... Location... Location

The parcel that received the least (but still received some) votes, was settlement land parcel C – 64BD, in Riverdale. Close to amenities, on transit routes, and the Yukon River, this parcel offers much, but the historic importance and land use is highlighted as a major constraint.



Benefits

- On bus routes
- Grocery store nearby
- Residential area
- Safe for families
- Great site for daycare
- Lots of parking opportunities
- close to gas station

- Too small
- Historic residential school site = bad juju and even dogs don't want to go there
- No escape route if bridge goes out of commission
- Riverdale-crawl is brutal
- Residential area

Challenges

One building? Two buildings? Both?

There remains a divide in the vision of whether the needs and wishes of the Nation can be met with a single building, two buildings, a combination of that, and where these will be located.

Using stickers, participants in this week's workshop voted on their penultimate vision...

Option 1: A single (large) building that would house and provide Administration and Gathering Place services.

Option 2: Two distinct buildings, each providing very separate services and structures.

Option 3: One building that would include all services for both Administration and a Gathering Place, but also have a smaller satellite building providing a defined and smaller scope... with one of these buildings being located at Lake Laberge, and the other in town...

Next Steps ...

DDDC has heard from citizens that there is not the equal representation of all citizens at these meetings. We appreciate that this is a commitment, and we want the input of as many people as possible, and we continue to endeavour to make this process as transparent and accessible as possible.

In the weeks ahead, DDDC will be heading to Lake Laberge to gain the input from those unable to attend the in-town meetings.

Further, DDDC will be working to develop conceptual design plans based on the wishes and dreams communicated throughout this process.

DDDC will be reconvening the weekly workshops with the input from citizens, presenting conceptual designs, and seeking your feedback on the plans moving forward.

Next workshop >>>

April 24, 2019

EVENTS CANCELLED

In lieu of our usual workshops, the DDDC team is heading to Lake Laberge to seek the input from citizens unable to attend in town.

April 10 and April 17 workshops are cancelled.

ANNOUNCEMENT!

Artist Needed!

DDDC needs an artist who can capture the essence and ideas from these workshops and generate conceptual drawings to present in the coming weeks.

Is this you?

CONTACT US ASAP!

*Don't see your voice reflected here?
Want to get involved but can't attend?*

Please let us know!

Contact:

Ben Asquith, CEO

Da Daghay Development Corporation

867.332.7898

[*dadaghay@northwestel.net*](mailto:dadaghay@northwestel.net)